

Gaussian Curvature and Gyroscopes

GRAHAM COX

The Pennsylvania State University

MARK LEVI

The Pennsylvania State University

Abstract

We relate Gaussian curvature to the gyroscopic force, thus giving a mechanical interpretation of the former and a geometrical interpretation of the latter. We do so by considering the motion of a spinning disk constrained to be tangent to a curved surface. It is shown that the spin gives rise to a force on the disk that is equal to the magnetic force on a point charge moving in a magnetic field normal to the surface, *of magnitude equal to the Gaussian curvature, and of charge equal to the disk's axial spin*. In a special case, this demonstrates that the precession of Lagrange's top is due to the curvature of a sphere determined by the parameters of the top. © 2017 Wiley Periodicals, Inc.

1 Introduction

Lagrange's top is an axisymmetric rigid body with one point on the axis fixed, subject to a gravitational force [5]. It is equivalent to a disk mounted on an axle attached to a ball joint, as in Figure 1.1(a), or a particle—namely, the disk's center—moving on a sphere under the influence of gravitational and magnetic forces [2]. It is the “magnetic force,” i.e., the gyroscopic effect, that causes the top to precess.

In this paper we point out a connection with Gaussian curvature, by showing that the motion of the Lagrange top is the same as the motion of a charged particle

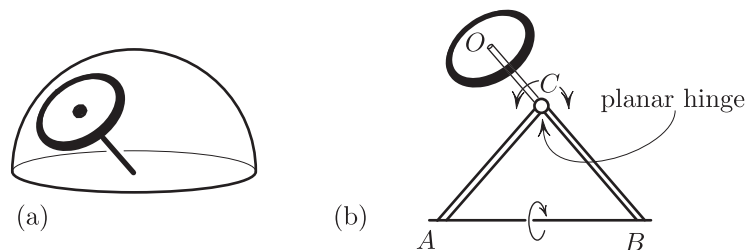


FIGURE 1.1. (a) A spinning top viewed as a disk tangent to a sphere. (b) A disk tangent to a torus. The axle CO , constrained to the plane ABC , sweeps out a circle in that plane; the torus is generated by revolving this circle about the axis AB .

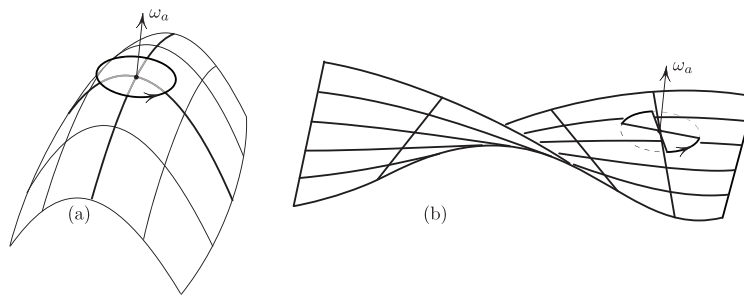


FIGURE 1.2. The rotating tangent disk. The disk intersects the surface in the negative curvature case (b), but this situation is physically realizable, e.g., by the construction of Figure 1.1(b).

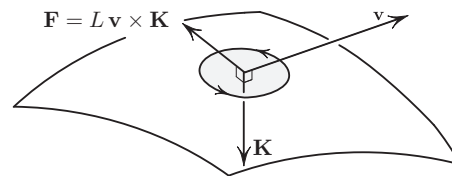


FIGURE 1.3. The main result: the spinning disk acts as if subject to the “Lorentz force” $\mathbf{F} = L\mathbf{v} \times \mathbf{K}$, with $\mathbf{K} = K(-\mathbf{n})$, where \mathbf{n} is the unit normal vector in the positive direction relative to a chosen orientation of the surface and K is the Gaussian curvature. Thus $\mathbf{B} = \mathbf{K}$ can be interpreted as the magnetic field, and $q = L$ as the charge. Choosing the opposite orientation will not affect \mathbf{F} as both \mathbf{n} and L would change sign.

in a magnetic field normal to the sphere and equal in magnitude to the Gaussian curvature, with the particle’s charge given by the angular momentum of the top around its symmetry axis.

One might argue that this is just a coincidence, since the geometry of the sphere is so particular. We show that this is no coincidence, and is in fact a reflection of a deeper relationship between curvature and dynamics. To see this, we consider the generalization of the top, namely a spinning massive disk constrained to be tangent to a smooth surface, with the contact point free to slide along the surface, as illustrated in Figures 1.1(b) and 1.2.

Our main result, illustrated in Figure 1.3, is that the rotation of the disk around its axle produces an additional force acting on the center of the disk, perpendicular to the velocity, of magnitude

$$(1.1) \quad F = LvK$$

where L is the axial angular momentum of the disk, K is the Gaussian curvature of the surface, and v is the speed of the disk’s center. In other words, the trajectory of the spinning disk’s center is the same as that of a nonspinning disk subject to this

additional force. This is exactly the same as the Lorentz force acting on a charged particle in a magnetic field, with L being the charge and K being the strength of the magnetic field. This results in a physical interpretation of Gaussian curvature as a “magnetic field” and angular momentum as “charge.” We point out that the product LvK is the only homogeneous expression in L , v , and K that has units of force.

It should be noted that a nonspinning disk is different from a point mass, since the former has some kinetic energy due to the rotation of the tangent plane. However, if the disk has a small radius this portion of energy is small relative to the translational energy, and if it is neglected then the two systems are equivalent. By contrast, if the disk spins rapidly the kinetic energy due to the axial spin cannot be ignored, even when the radius is small. This is discussed in more detail in Section 2.2.

In the approximation mentioned in the preceding paragraph, that is, for a small, rapidly spinning disk, there exist coordinates (x_1, x_2) at any given point in which the equations of motion take the form

$$m\ddot{x}_1 = -L\dot{x}_2K, \quad m\ddot{x}_2 = L\dot{x}_1K.$$

The result is precisely formulated in Section 2 and proved in Section 3, with a heuristic explanation given in Section 4. We conclude in Section 5 by giving a coordinate-free formulation and proof of the main result using the language of modern differential geometry. This provides as a special case an (apparently new) variational derivation of the equations of motion of Lagrange’s top.

Remark 1.1. The result gives further motivation to the problem of studying curves for which the geodesic curvature is a constant multiple of the Gaussian curvature, $k = cK$. Indeed, the geodesic curvature is $k = a/v^2$, where a is the acceleration due to the magnetic force. Substituting $a = m^{-1}LvK$ from (1.1), we get

$$k = \frac{L}{mv}K.$$

Note that v is constant since the force is perpendicular to the velocity, and the constant c is precisely the ratio of angular momentum to linear momentum. This is a subclass of a wider class of problems on “magnetic geodesics” considered by Arnold [1] and many others; see [3] and references therein.

Remark 1.2. We arrived at the spinning disk problem through the following series of associations. In analyzing the dynamics of a tight binary orbiting a larger star we were led naturally to a simplified problem: a dumbbell, such as a pair of tethered satellites, spinning and orbiting a gravitational center (this work is to appear elsewhere). This in turn led us to consider a “geodesic dumbbell”: two point masses constrained to a surface and a fixed small geodesic distance apart. An interesting effect in all of these problems is the appearance of a “magnetic” force due to the spin. (Incidentally, such a magnetic force appears also for a single point mass if

the force field itself is spinning, as pointed out in [4].) The spinning disk considered here is a simplification of the geodesic dumbbell, chosen to demonstrate the magnetic effect with a minimum of technicalities.

2 Results

We now formulate the main result of the paper—the equations of motion of the spinning disk on a curved surface. In order to state the result, we first write the kinetic energy of the disk in a special coordinate system, then interpret geometrically the resulting Euler-Lagrange equations.

2.1 Classical Formulation

Let (x_1, x_2) be a local rectangular coordinate system on the surface, so that the lines $\{x_1 = \text{const}\}$ are orthogonal to the lines $\{x_2 = \text{const}\}$. We take these coordinates to be right-handed with respect to a chosen orientation of the surface. The metric ds^2 on the surface is then given by

$$(2.1) \quad ds^2 = a_{11} dx_1^2 + a_{22} dx_2^2.$$

Let $x = (x_1, x_2)$ denote the coordinates of the disk's center.

The rotational part of the kinetic energy of the disk is $\frac{1}{2}\langle I\boldsymbol{\omega}, \boldsymbol{\omega} \rangle$, where I is the tensor of inertia of the disk around its center of mass and $\boldsymbol{\omega}$ is the angular velocity. Decomposing the latter along the axial direction and the rest, we obtain the total kinetic energy (translational plus rotational) as

$$(2.2) \quad E = \frac{1}{2}mv^2 + \frac{1}{2}I_a\omega_a^2 + \frac{1}{2}I_d\omega_d^2,$$

where ω_a and ω_d are the scalar values of the two projections of $\boldsymbol{\omega}$ (axial and along a diameter), m is the mass of the disk, and v is the speed of the center of the disk: $v^2 = \langle A\dot{x}, \dot{x} \rangle$, where $A = \text{diag}(a_{11}, a_{22})$ and where $\langle \cdot, \cdot \rangle$ denotes the euclidean inner product. It follows that a nonspinning¹ disk has kinetic energy

$$(2.3) \quad T = \frac{1}{2}mv^2 + \frac{1}{2}I_d\omega_d^2,$$

and its center moves according to

$$\frac{d}{dt}T_{\dot{x}} - T_x = 0.$$

We now describe what happens when the disk has nonzero angular momentum around its axle.

THEOREM 2.1. *Define $T = T(x, \dot{x})$ as in (2.3) and let $K = K(x)$ denote the Gaussian curvature of the surface. Then the angular momentum $L = I_a\omega_a$ about*

¹I.e., $\omega_a = 0$. Geometrically, this means any material radius-vector of the disk undergoes parallel transport along the curve $x(t)$.

the disk's axle is a conserved quantity and the motion of the disk's center is governed by

$$(2.4) \quad \frac{d}{dt}T_{\dot{x}} - T_x = \sqrt{a_{11}a_{22}}L(J\dot{x})K, \quad J = \begin{pmatrix} 0 & -1 \\ 1 & 0 \end{pmatrix}.$$

To uncover the intrinsic meaning of the equations of motion (2.4), fix a point P on the trajectory and let (x_1, x_2) be the Cartesian coordinates in the plane tangent to the surface at P ; the nearby positions on the trajectory are then given by the coordinates (x_1, x_2) of the orthogonal projection onto this tangent plane. In these coordinates, $a_{11} = a_{22} = 1$ at P , and (2.4) simplifies to

$$(2.5) \quad \frac{d}{dt}T_{\dot{x}} - T_x = L(J\dot{x})K \quad \text{at } P.$$

This confirms our earlier claim that the axial spin amounts precisely to the addition of a “magnetic field” orthogonal to the surface and of magnitude K .

Remark 2.2. It is possible to include potential energy terms in T , allowing for external forces such as gravity, but these have no bearing on our result as they do not affect the “magnetic” term.

2.2 The Small, Rapidly Spinning Disk

Further simplification occurs if we ignore the last term in (2.2). This approximation is justified if the radius of the disk is small in the following sense. Since $|\omega_d| \leq \|h\|v$, where h denotes the second fundamental form of the surface, we obtain

$$\frac{I_d \omega_d^2}{mv^2} \leq \frac{R^2 \|h\|^2}{4}$$

where R is the radius of the disk. Thus the translational kinetic energy dominates the energy of rotation around the diameter when $R\|h\| \ll 1$. Moreover, since $I_a = 2I_d$, the second term in (2.2) will be much larger than the third if ω_a , the axial spin, is large relative to ω_d , i.e., $\omega_d/\omega_a \ll 1$.

We thus define the *small, rapidly spinning disk* to be the system with kinetic energy

$$(2.6) \quad E = \frac{1}{2}mv^2 + \frac{1}{2}I_a\omega_a^2.$$

In this case the center moves *precisely* like a particle of charge L in a magnetic field of strength K . In particular, (2.5) becomes

$$(2.7) \quad m\ddot{x} = L(J\dot{x})K \quad \text{at } P,$$

or equivalently

$$(2.8) \quad m\ddot{x}_1 = -L\dot{x}_2K, \quad m\ddot{x}_2 = L\dot{x}_1K.$$

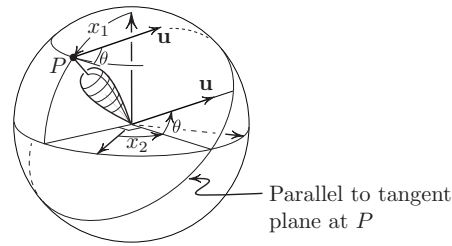


FIGURE 2.1. Euler's angles: $x_1 = \pi/2 - \text{latitude}$; $x_2 = \pi/2 - \text{longitude}$; and $\theta = \text{the angle of a chosen vector } \mathbf{u} \text{ with the parallel } \{x_1 = \text{const}\}$.

2.3 An Application to the Lagrange Top

We now describe more explicitly the role of Gaussian curvature in the dynamics of the Lagrange top.

The configuration space $SO(3)$ can be parametrized by Euler angles, which we denote by x_1 , x_2 , and θ , as shown in Figure 2.1 (thus breaking with the tradition of using Greek letters exclusively). Here (x_1, x_2) are the coordinates of the point of intersection of the axle with a sphere (namely, the angles complementary to the latitude and the longitude angles), and θ is the angle between the parallel on the sphere through P and a vector \mathbf{u} rigidly attached to the top and normal to the top's axle. The kinetic energy is

$$(2.9) \quad E_{\text{top}} = \frac{1}{2} I_1 (\dot{x}_1^2 + \dot{x}_2^2 \sin^2 x_1) + \frac{1}{2} I_3 (\dot{\theta} + \dot{x}_2 \cos x_1)^2,$$

where I_3 is the moment of inertia about the top's axle, and I_1 is the moment of inertia about any perpendicular axis. The first term in (2.9) coincides with the expression for the kinetic energy of a point mass m on the sphere of radius R , namely $\frac{1}{2} m R^2 (\dot{x}_1^2 + \dot{x}_2^2 \sin^2 x_1)$ provided

$$(2.10) \quad m R^2 = I_1.$$

This still leaves some freedom in choosing m and R . We use this freedom by insisting that the potential energy (which we excluded so far) of our point mass equals the potential energy of the top: $m g R \cos x_1 = M g \ell \cos x_1$, where M denotes the top's mass, and ℓ the distance from the origin to the top's center of mass. This and (2.10) fixes R and m :

$$(2.11) \quad R = \frac{I_1}{M \ell}, \quad m = \frac{M^2 \ell^2}{I_1}.$$

To summarize, to any Lagrange top we assign a radius R and a point mass m , so the kinetic energy of the top becomes

$$(2.12) \quad E_{\text{top}} = \frac{1}{2} m v^2 + \frac{1}{2} I_3 \omega_a^2.$$

This is precisely the form of (2.6) with $I_a = I_3$. That is, the Lagrange top turns out to be an exact incarnation of the “small, rapidly spinning disk” moving on a sphere of radius R , as given by (2.11). According to Theorem 2.1, the point at which the axle punctures the sphere behaves as if it were subject to a Lorentz force of magnitude $L\nu K$, where L is the axial angular momentum and where $K = 1/R^2$ is the Gaussian curvature of the sphere.

2.4 Intrinsic Formulation

The equations of motion (2.4) depend on local coordinates, which tends to obscure their geometric nature. On the other hand, the simplified forms (2.5) and (2.8), while geometrically transparent, are only valid in a particular coordinate system at a single point. We address this concern by writing the equations of motion in an invariant manner, retaining the special assumption of a small, rapidly spinning disk.

The center of the disk moves along a parametrized curve γ on the surface, with velocity $\dot{\gamma}$. Letting D_t denote the covariant derivative operator along γ , the acceleration of the center is $D_t\dot{\gamma}$, and so the equation of a geodesic is $D_t\dot{\gamma} = 0$. In these notations Theorem 2.1 can be reformulated in the following coordinate-free way.

THEOREM 2.3. *The center of the small, rapidly spinning disk moves according to*

$$(2.13) \quad mD_t\dot{\gamma} = L(J\dot{\gamma})K,$$

where L is constant and J denotes counterclockwise rotation by $\pi/2$ in the tangent plane.

This should be read as a coordinate-free version of (2.8): the left-hand side is mass times acceleration and the right-hand side is the magnetic force acting on the disk’s center. Further details and the proof are given in Section 5.

3 Equations of Motion: Coordinate Version

In this section we show how the Gaussian curvature arises in the Euler-Lagrange equations, thus proving Theorem 2.1.

In order to write the kinetic energy E in coordinates, we choose a local rectangular coordinate system (x_1, x_2) on the surface. Marking a particular radius on the disk, denote by θ the angle this radius makes with the positive direction of the lines $\{x_2 = \text{const}\}$. Thus the triple (x_1, x_2, θ) parametrizes (locally) the configuration space of the disk. Having thus coordinatized the configuration space, we need to find an expression for ω_a . To that end we need an expression of the parallel transport (which corresponds to $\omega_a = 0$); this is provided by the following lemma.

LEMMA 3.1. *The parallel transport of a tangent vector along a curve $x(t) = (x_1(t), x_2(t))$ on the surface is given by*

$$(3.1) \quad \dot{\theta} = -\sqrt{a_{11}}k_1\dot{x}_1(t) - \sqrt{a_{22}}k_2\dot{x}_2(t),$$

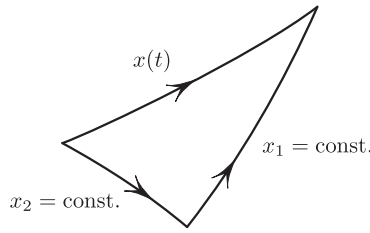


FIGURE 3.1. Towards the proof of (3.1).

where k_1 and k_2 are the geodesic curvatures of the coordinate lines $\{x_2 = \text{const}\}$ and $\{x_1 = \text{const}\}$, respectively, and a_{ii} are the coefficients of the metric tensor (2.1).

Remark 3.2. A more geometric form of (3.1) (which we do not use) is

$$(3.2) \quad d\theta = -k_1 ds_1 - k_2 ds_2,$$

where ds_i are the length elements along the coordinate curves. Equivalently,

$$(3.3) \quad \theta' = -k_1 \cos \varphi - k_2 \sin \varphi,$$

where φ is the angle between the curve $x(t)$ and the coordinate lines $\{x_2 = \text{const}\}$.

PROOF. Figure 3.1 shows an infinitesimal triangle whose two sides are lines $x_1 = \text{const}$, $x_2 = \text{const}$, and whose “hypotenuse” is a segment of $x(\cdot)$ along which we want to transport. Transporting a tangent vector along the curve $x(\cdot)$ we get $\Delta_{\text{hyp}}\theta$ (the change of the angle it forms with the lines $x_2 = \text{const}$, the quantity we are interested in). But by the Gauss-Bonnet theorem

$$\Delta_{\text{hyp}}\theta = \Delta_1\theta + \Delta_2\theta + O(dx_1 dx_2),$$

where $\Delta_i\theta$ denote the change of θ under parallel transport along the “legs” of the triangle in Figure 3.1 in the direction of the arrows. Using

$$\Delta_1\theta = -k_1 ds_1 \quad \text{where } ds_1 = \sqrt{a_{11}} dx_1,$$

and similarly for the other curve leads to (3.2) and thus to (3.1). □

According to (3.1), the axial component of the angular velocity of the disk is

$$(3.4) \quad \omega_a = \dot{\theta} + k_1 \sqrt{a_{11}} \dot{x}_1 + k_2 \sqrt{a_{22}} \dot{x}_2 \stackrel{\text{def}}{=} \dot{\theta} + f(x)\dot{x},$$

where

$$x = (x_1, x_2) \quad \text{and} \quad f(x) = (k_1 \sqrt{a_{11}}, k_2 \sqrt{a_{22}}).$$

Indeed, according to the lemma, the right-hand side of (3.4) measures the mismatch with parallel transport. The kinetic energy of the disk in these coordinates is

$$(3.5) \quad E = \frac{1}{2} I_a (\dot{\theta} + f(x)\dot{x})^2 + \underbrace{\frac{1}{2} (m \langle A\dot{x}, \dot{x} \rangle + I_d h(\dot{x}, \dot{x}))}_{T=T(x,\dot{x})}$$

where h is the second fundamental form of the surface. The term T is the kinetic energy of the nonspinning disk; if $I_d h(\dot{x}, \dot{x})$ can be neglected, then T is simply the kinetic energy of the point mass m .

The Euler-Lagrange equations for the Lagrangian E are

$$(3.6) \quad \frac{d}{dt}(\dot{\theta} + f(x)\dot{x}) = 0$$

and

$$(3.7) \quad \frac{d}{dt} T_{\dot{x}} - T_x + I_a \left((\dot{\theta} + f(x)\dot{x})(f_x - f_x^T)\dot{x} + \frac{d}{dt}(\dot{\theta} + f(x)\dot{x}) \right) = 0.$$

According to (3.6), $\dot{\theta} + f(x)\dot{x}$ is constant along any solution—this is simply the angular velocity of the disk around its axle. Fixing an arbitrary value ω_a of this constant, we limit our attention to the invariant subspace of the phase space satisfying

$$\dot{\theta} + f(x)\dot{x} = \omega_a.$$

For such solutions (3.7) reduces to

$$(3.8) \quad \frac{d}{dt} T_{\dot{x}} - T_x + L(f_x - f_x^T)\dot{x} = 0,$$

where $L = I_a \omega_a$, with the skew-symmetric matrix

$$(3.9) \quad f_x - f_x^T = - \underbrace{((k_1 \sqrt{a_{11}})_{x_2} - (k_2 \sqrt{a_{22}})_{x_1})}_{\widehat{K}(x)} \underbrace{\begin{pmatrix} 0 & -1 \\ 1 & 0 \end{pmatrix}}_J.$$

LEMMA 3.3. *With the above assumptions and notations,*

$$(3.10) \quad \widehat{K}(x) = \sqrt{a_{11}a_{22}} K(x),$$

where K is the Gaussian curvature of the surface.

PROOF. Assume $x = (0, 0)$ without loss of generality. Consider a patch on the surface corresponding to $x_1 \in [0, \varepsilon]$ and $x_2 \in [0, \delta]$ for small ε, δ . The Gauss-Bonnet formula applied to this patch gives

$$(3.11) \quad \int_0^\varepsilon \int_0^\delta K(x_1, x_2) \sqrt{a_{11}a_{22}} dx_1 dx_2 + 4\frac{\pi}{2} + \int k ds = 2\pi,$$

where the term $4\frac{\pi}{2} = 2\pi$ comes from the four right angles of the rectangle—here the assumption of the orthogonality of the coordinate system is used—and k is the geodesic curvature. Now $\int k ds$ is the sum of four terms, which we group into pairs corresponding to opposite sides:

$$\begin{aligned} \int k ds &= \int_0^\varepsilon ((a_{11}k_1)(x_1, 0) - (a_{11}k_1)(x_1, \delta)) dx_1 \\ &\quad + \int_0^\delta ((a_{22}k_2)(\varepsilon, x_2) - (a_{22}k_2)(0, x_2)) dx_2, \end{aligned}$$

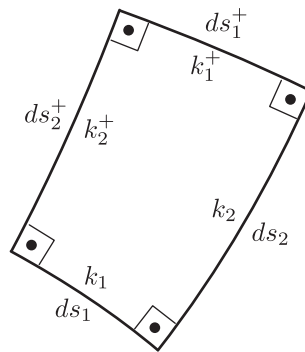


FIGURE 3.2. Illustrating the proof of Lemma 3.3 on Gaussian curvature.

where $(a_{11}k_1)(x, y)$ denotes the product evaluated at (x, y) . Substituting this into (3.11), dividing by $\varepsilon\delta$, and sending $\varepsilon, \delta \rightarrow 0$ results in (3.10). \square

Substituting (3.10) into (3.9) we reduce the Euler-Lagrange equation (3.8) to the form (2.4), thus completing the proof of Theorem 2.1.

4 A Heuristic Explanation of the Appearance of Gaussian Curvature

We now give a short heuristic explanation of our result. After that we discuss two special cases, stripped of all formalism, to give a physical insight into “what is really going on.” The underlying intuition in all this is the following: if we hold a spinning wheel by two ends of its axle and attempt to change its orientation, the axle “resists” by pushing our hands in the direction *orthogonal* to their motion. An elementary explanation of this can be found in, e.g., [6, p. 154].

An Explanation of the Magnetic Force—General Case

In the neighborhood of the tangency point with the disk, the surface is given by the graph of

$$z = \frac{1}{2}\langle H\mathbf{x}, \mathbf{x} \rangle + O(|\mathbf{x}|^3), \quad H = \begin{pmatrix} a & b \\ b & c \end{pmatrix}, \quad \mathbf{x} = \begin{pmatrix} x_1 \\ x_2 \end{pmatrix}.$$

A unit normal vector to this surface is $\mathbf{n} = (H\mathbf{x}, -1) + O(|\mathbf{x}|^2) \in \mathbb{R}^3$, and $\dot{\mathbf{n}} = (H\mathbf{v}, 0)$ at the instant when the center of the disk is at $\mathbf{x} = \mathbf{0}$. But $I_a\omega_a\mathbf{n} = \mathbf{L}$ is the axial angular momentum, and thus the torque upon the disk is

$$(4.1) \quad \boldsymbol{\tau} = \dot{\mathbf{L}} = I_a\omega_a(H\mathbf{v}, 0).$$

This torque can be attributed to two forces, \mathbf{F}_a and \mathbf{F}_b , normal to the disk acting at two points a and b whose connecting segment is normal to $H\mathbf{v}$, as shown in Figure 4.1.

The resultant force is

$$\mathbf{F}_b + \mathbf{F}_a = (\mathbf{n}_b - \mathbf{n}_a)F,$$

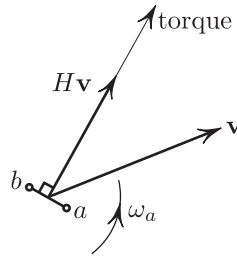


FIGURE 4.1. The force \mathbf{F}_b upon the disk points out of the page; \mathbf{F}_a points into the page.

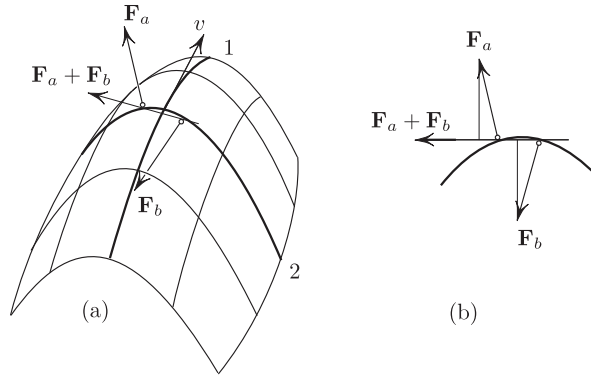


FIGURE 4.2. The vector \mathbf{v} is tangent to a line of principal curvature. The torque upon the disk is equivalent to the torque of a couple $\mathbf{F}_a, \mathbf{F}_b$ exerted upon the disk at two points a small distance ds apart.

where \mathbf{n}_a and \mathbf{n}_b are unit normal vectors and $F = |\mathbf{F}_a| = |\mathbf{F}_b|$. The (x_1, x_2) -projection of the resultant is therefore

$$(4.2) \quad (\mathbf{n}_b - \mathbf{n}_a)_{x_1 x_2} F = H(b - a)F = H \frac{(H\mathbf{v})^\perp}{|H\mathbf{v}|} ds F = H \frac{JH\mathbf{v}}{|H\mathbf{v}|} \tau.$$

A direct computation yields $HJH = KJ$, where $K = \det H$ is the Gaussian curvature. Substituting this and $\tau = |\boldsymbol{\tau}|$ from (4.1) into (4.2) we get

$$(\mathbf{F}_b + \mathbf{F}_a)_{x_1 x_2} = I_a \omega_a (J\mathbf{v})K = L(J\mathbf{v})K,$$

in agreement with (1.1) and Figure 1.3.

The above explanation still relies on a small calculation (4.2); the following two special cases are treated purely geometrically, with nothing hidden by calculation.

Special Case 1: \mathbf{v} Is Tangent to a Line of Principal Curvature

With the velocity \mathbf{v} pointing in a principal direction, the disk undergoes an additional rotation around the diameter tangent to the other principal direction (line 2 in Figure 4.2(a)) with the angular velocity $\omega_r = v\kappa_1$, where κ_1 is the principal

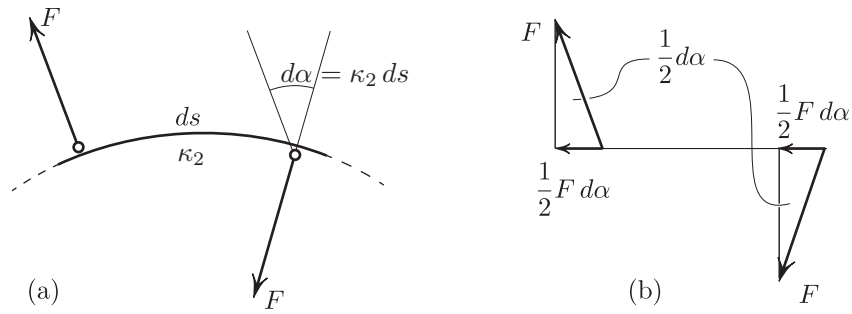


FIGURE 4.3. The origin of the “magnetic” force. (a) The torque τ that the surface exerts upon the disk can be equivalently represented by the torque of two forces at an infinitesimal distance ds ; the result (4.5) does not depend on ds . (b) Computing $F_{\text{deflection}}$.

curvature in the direction \mathbf{v} . As the result of this reorientation, the disk exerts the gyroscopic torque²

$$(4.3) \quad \tau = Lv\kappa_1$$

against the tangency constraint (this can be seen from (4.1)), and the surface reacts with an equal and opposite torque, which can be considered to be due to the torque of two forces, \mathbf{F}_a and \mathbf{F}_b , applied by the surface to the disk, as in Figure 4.2(a). The torque of these forces points into the page in Figure 4.2(b). Figure 4.2(b) explains the key point: the sum of these reaction forces points to the left in the figure, i.e., is normal to \mathbf{v} . This is precisely the “magnetic force” mentioned earlier.

We now compute the magnitude of this force, referring to the magnified view of Figure 4.3(b). We have

$$(4.4) \quad F_{\text{deflection}} = F d\alpha = F\kappa_2 ds,$$

where κ_2 is the curvature of curve 2 in Figure 4.2. But

$$F ds = \tau \stackrel{(4.3)}{=} Lv\kappa_1.$$

Substituting this into (4.4) gives

$$(4.5) \quad F_{\text{deflection}} = Lv\kappa_1\kappa_2 = LvK,$$

which agrees with Figure 1.3 and coincides with the general formula derived in Sections 3 and 5.

As an example, for the cylinder or for the cone we have $F_{\text{deflection}} = 0$. In general, the sign of K affects the direction (“left” or “right” of \mathbf{v}) of the deflection force.

² See, e.g., [6].

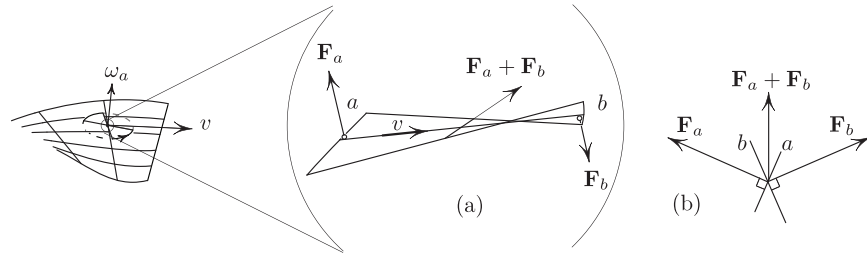


FIGURE 4.4. The velocity \mathbf{v} points along the straight line on a ruled surface of negative curvature. In (b), \mathbf{v} points into the page.

Special Case 2: \mathbf{v} Points along a Straight Line on a Ruled Surface of Negative Curvature

When \mathbf{v} points along a straight geodesic (Figure 4.4), the disk’s plane undergoes instantaneous rotation around the diameter aligned with this geodesic (in addition to the axial spin). The resulting gyroscopic effect causes the disk to apply a torque to the surface; the surface reacts with the equal and opposite torque, which can be thought of being due to two point forces \mathbf{F}_a and \mathbf{F}_b acting at two points a and b on the geodesic (this torque tries to twist the disk around the diameter perpendicular to \mathbf{v}). Figure 4.4(b) shows that these forces have a nonzero resultant, *due to the surface’s twisting*, and that this resultant points normal to \mathbf{v} . It remains to confirm that the magnitude of this force is given by (4.5).

Let us choose coordinates so that the straight geodesic is the x -axis, and the z -axis is normal to the surface at the point in question. Any ruled surface satisfies

$$z = \kappa xy + o(x^2 + y^2)$$

for some constant κ . The Gaussian curvature of this surface at $(0, 0, 0)$ is $K = -\kappa^2$. We are interested in the resultant $\mathbf{F}_a + \mathbf{F}_b$; its magnitude is

$$(4.6) \quad F d\alpha = F\kappa dx,$$

where $F = |\mathbf{F}_a| = |\mathbf{F}_b|$, α is the angle between the normals at a and b , and x is the distance along the geodesic. We find F from the torque condition, as we did before in (4.3):

$$\tau = F dx = L\omega_r = L\kappa v.$$

We conclude that the resultant (4.6) is

$$F\kappa dx = L\kappa^2 v = -LKv,$$

in agreement with the general case, as claimed.

5 Equations of Motion: Coordinate-Free Version

In this section we outline an alternative proof of Theorem 2.3, and thus of Theorem 2.1. As opposed to the proof given above, this one is variational and coordinate-free.

As in Section 2.4, we suppose the center of the disk follows a curve γ on the surface, with velocity $\dot{\gamma}$ and acceleration $D_t\dot{\gamma}$. We fix a unit vector u pointing from the center of the disk to the distinguished point on the boundary, so the configuration space of the spinning disk is the unit tangent bundle of the surface.

By the argument of Lemma 3.1, the axial component of the angular velocity is $\omega_a = \langle D_t u, Ju \rangle$, and hence the small, rapidly spinning disk has kinetic energy

$$(5.1) \quad E(\gamma, u) = \frac{1}{2} m |\dot{\gamma}|^2 + \frac{1}{2} I_a |D_t u|^2.$$

For a smooth curve (γ, u) in the unit tangent bundle³ we define the action integral

$$\mathcal{S}(\gamma, u) = \frac{1}{2} \int_a^b (m |\dot{\gamma}|^2 + I_a |D_t u|^2) dt.$$

The desired equations of motion are precisely the variational (Euler-Lagrange) equations for \mathcal{S} .

To compute the variation, let $(\gamma_s(t), u_s(t))$ denote a smooth family of curves in the unit tangent bundle, with $(\gamma_0(t), u_0(t)) = (\gamma(t), u(t))$. Define the variation fields $V = \partial_s \gamma_s$ and $w = D_s u_s$. Substituting γ_s, u_s into the action integral and differentiating the first term in the integrand, we have

$$(5.2) \quad \frac{1}{2} \frac{d}{ds} |\dot{\gamma}_s|^2 = \langle D_s \dot{\gamma}, \dot{\gamma} \rangle = \langle D_t V, \dot{\gamma} \rangle.$$

For the second term in we compute at $s = 0$:

$$\frac{1}{2} \frac{d}{ds} |D_t u_s|^2 = \langle D_s D_t u, D_t u \rangle = \langle D_t D_s u, D_t u \rangle + \langle R(V, \dot{\gamma})u, D_t u \rangle,$$

where R is the Riemann curvature operator. From the definition of w we obtain $\langle D_t D_s u, D_t u \rangle = \langle D_t w, D_t u \rangle$. Next, using the formula for the Riemann curvature tensor on a surface we compute

$$\begin{aligned} \langle R(V, \dot{\gamma})u, D_t u \rangle &= K(\langle V, D_t u \rangle \langle \dot{\gamma}, u \rangle - \langle V, u \rangle \langle \dot{\gamma}, D_t u \rangle) \\ &= \langle V, K(\langle \dot{\gamma}, u \rangle D_t u - \langle \dot{\gamma}, D_t u \rangle u) \rangle. \end{aligned}$$

Substituting $D_t u = \omega_a Ju$, we obtain

$$\begin{aligned} \langle \dot{\gamma}, u \rangle D_t u - \langle \dot{\gamma}, D_t u \rangle u &= \omega_a [\langle \dot{\gamma}, u \rangle Ju - \langle \dot{\gamma}, Ju \rangle u] \\ &= \omega_a J[\langle \dot{\gamma}, u \rangle u + \langle \dot{\gamma}, Ju \rangle Ju] \\ &= \omega_a J \dot{\gamma}, \end{aligned}$$

since (u, Ju) is an orthonormal basis. It follows that

$$(5.3) \quad \frac{1}{2} \frac{d}{ds} |D_t u_s|^2 = \langle D_t w, D_t u \rangle + \langle V, \omega_a K J \dot{\gamma} \rangle.$$

³That is, γ is a curve on the surface and u is a curve of unit tangent vectors such that $u(t)$ is in the tangent plane at $\gamma(t)$ for each time t .

Combining (5.2) and (5.3) and integrating by parts, we obtain

$$\frac{d}{ds} E(\gamma_s, u_s) \Big|_{s=0} = \int_a^b ((V, I_a \omega_a K J \dot{\gamma} - m D_t \dot{\gamma}) - I_a \langle w, D_t^2 u \rangle) dt$$

as long as the variations V and w vanish at the endpoints $t = a, b$. Since V and w are arbitrary, the critical points must satisfy

$$m D_t \dot{\gamma} = I_a \omega_a K J \dot{\gamma}, \quad D_t^2 u = 0.$$

The first equation is precisely (2.13), with $L = I_a \omega_a$. To complete the proof of Theorem 2.3, we just need to show that ω_a is constant. This is the case because $|\omega_a| = |D_t u|$ and

$$\frac{d}{dt} |D_t u|^2 = 2 \langle D_t^2 u, D_t u \rangle = 0.$$

Acknowledgments. The authors are grateful for the many helpful comments by the referee, in particular for stimulating us to add an application, resulting in Section 2.3 on the Lagrange top. They also gratefully acknowledge support from National Science Foundation Grant DMS-1412542. The first author also acknowledges the support of NSERC Grant RGPIN-2017-04259.

Bibliography

- [1] Arnold, V. I. On some problems in symplectic topology. *Topology and geometry—Rohlin Seminar*, 1–5. Lecture Notes in Mathematics, 1346. Springer, Berlin, 1988. doi:10.1007/BFb0082767
- [2] Cushman, R. H.; Bates, L. M. *Global aspects of classical integrable systems*. Second edition. Birkhäuser/Springer, Basel, 2015. doi:10.1007/978-3-0348-0918-4
- [3] Ginzburg, V. L.; Gürel, B. Z. Periodic orbits of twisted geodesic flows and the Weinstein-Moser theorem. *Comment. Math. Helv.* **84** (2009), no. 4, 865–907. doi:10.4171/CMH/184
- [4] Kirillov, O. N.; Levi, M. Rotating saddle trap as Foucault’s pendulum. *American Journal of Physics* **84** (2016), no. 1, 26–31. doi:10.1119/1.4933206
- [5] Klein, F.; Sommerfeld, A. *The theory of the top. Vol. I*. Introduction to the kinematics and kinetics of the top. Birkhäuser Boston, Boston, 2008. doi:10.1007/978-0-8176-4721-6
- [6] Levi, M. *Classical mechanics with calculus of variations and optimal control*. An intuitive introduction. Student Mathematical Library, 69. American Mathematical Society, Providence, R.I.; Mathematics Advanced Study Semesters, University Park, Pa., 2014. doi:10.1090/stml/069

GRAHAM COX
 Department of Mathematics
 and Statistics
 Memorial University of Newfoundland
 St. John’s, NL A1C 5S7
 CANADA
 E-mail: gcox@mun.ca

MARK LEVI
 Penn State University
 Mathematics Department
 University Park
 State College, PA 16802
 USA
 E-mail: levi@math.psu.edu

Received July 2016.
 Revised April 2017.